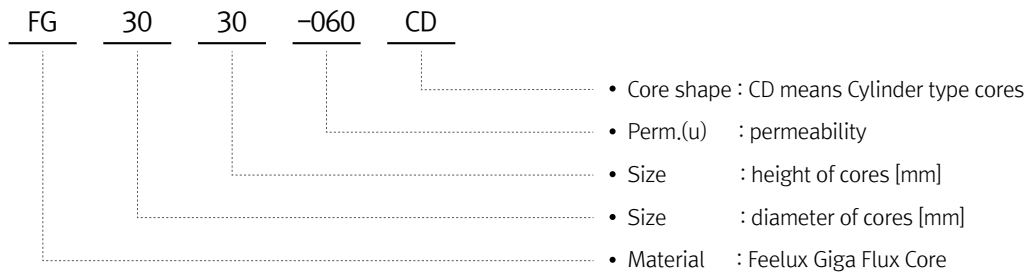


Cylinder Core series

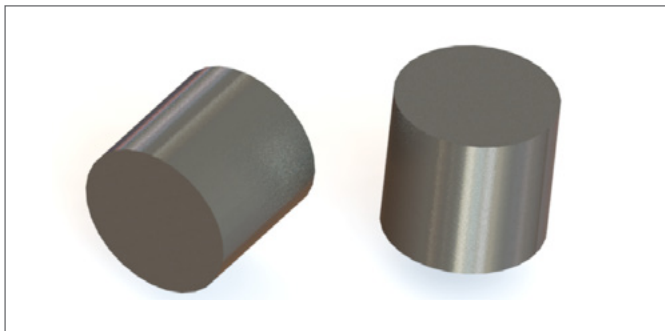
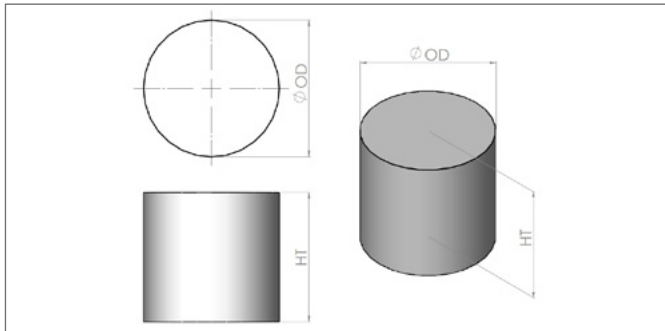
Identification of Feelux Cylinder Core Series



Where,
 G : Giga Flux Material [FeSi] C : permeability 60
 30 : 30mm
 30 : 30mm

Dimension specification of Feelux Cylinder Core series

[Fig.1] mechanical out lines [unit : mm] about Cylinder core series



[Table 2] shows out dimension specification of Cylinder Core series

P/N	Dimensions(mm)		Cross Section Area(cm ²)
	OD	HT	
2020	20.2 ± 0.2	20.0 ± 0.2	3.14
2424	24.0 ± 0.2	24.0 ± 0.2	4.50
2525	25.0 ± 0.2	25.0 ± 0.2	4.91
2825	27.6 ± 0.3	25.0 ± 0.2	6.00
2830	27.6 ± 0.3	30.0 ± 0.2	6.00
3026	30.0 ± 0.5	26.0 ± 0.2	7.07
3030	30.0 ± 0.5	30 ± 0.2	7.07
3035	30.0 ± 0.5	35.25 ± 0.2	7.07
3530	35.0 ± 0.5	30.0 ± 0.2	9.62
3735	37.0 ± 0.5	30.0 ± 0.2	10.75
4030	40.0 ± 0.6	30.0 ± 0.3	12.56
4230	42.0 ± 0.6	30.0 ± 0.3	13.85
4630	46.0 ± 0.6	30.0 ± 0.3	16.61
5030	50.0 ± 0.7	30.0 ± 0.4	19.63
5530	55.0 ± 0.7	30.0 ± 0.4	23.76
6030	60.0 ± 0.8	30.0 ± 0.5	28.27
6330	63.0 ± 0.8	30.0 ± 0.5	31.17
6830	68.0 ± 0.8	30.0 ± 0.5	36.31